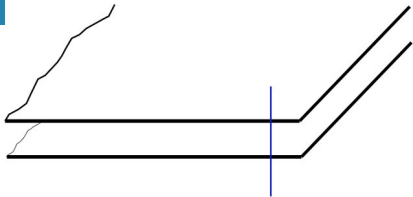
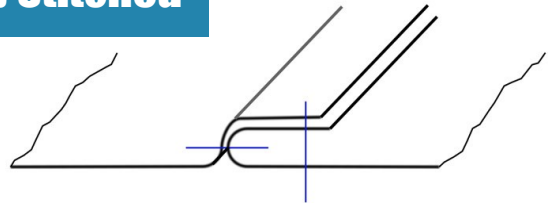


Plain



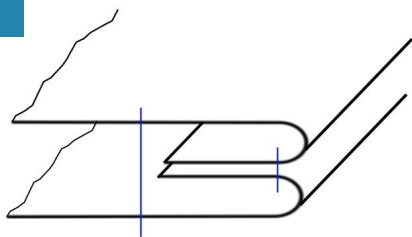
- ◆ Pin **right sides together**
- ◆ Begin 1cm from edge
- ◆ Back stitch to edge
- ◆ Stitch forward to other end
- ◆ Back stitch 1cm
- ◆ Press & finish raw edges

Top Stitched



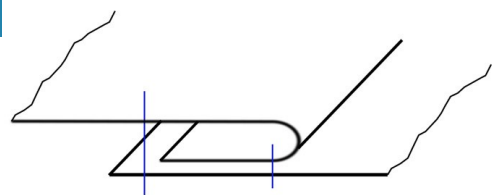
- ◆ Sew a plain seam
- ◆ Press seam allowance to one side
- ◆ Top stitch on right side of fabric

French



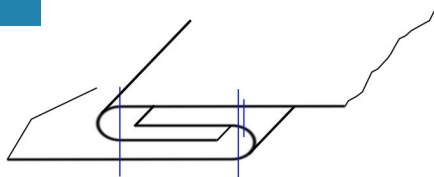
- ◆ Pin **wrong sides together**
- ◆ Stitch 0.5cm from raw edges
- ◆ Press allowance to one side
- ◆ Trim to 3mm
- ◆ Place **right sides together** & press
- ◆ Stitch along seam line

Welt



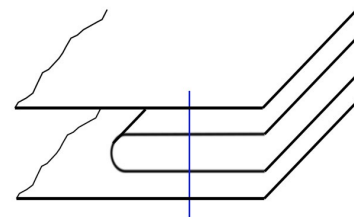
- ◆ Sew a plain seam
- ◆ Trim one side of allowance by 50%
- ◆ Finish untrimmed allowance (pink/zig-zag)
- ◆ Press finished allowance over short allowance
- ◆ Top stitch on **right side** to enclose trimmed allowance

Flat Fell



- ◆ Pin **wrong sides together**
- ◆ Stitch a plain seam
- ◆ Press allowance to one side
- ◆ Trim lower allowance to 2-3mm
- ◆ Turn & tuck top allowance under lower allowance
- ◆ Stitch close to folded edge

Piped



- ◆ Tack piping along seam line on **right side** of fabric
- ◆ Place other fabric piece over piping, **right sides together**
- ◆ Tack again
- ◆ Stitch along seam line